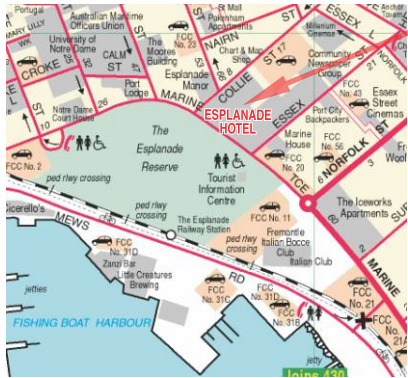




GSWA 2017



**ESPLANADE
HOTEL
FREMANTLE**
Cnr Marine Tce
& Essex St,
Fremantle
Friday
24 Feb. 2017

Geological Survey Open Day

Friday 24 February 2017

This is a great opportunity to hear presentations on the latest results from GSWA's geoscience programs, including collaborative work with CSIRO, Geoscience Australia, Curtin University and the Centre for Exploration Targeting (CET).

Activities and results of the Exploration Incentive Scheme will be outlined including the launch of Round 15 of the Government Co-funded Exploration Drilling program.

Throughout the day there will be geological presentations, an extensive poster display, and demonstrations of online systems.

Promoting the prospectivity of Western Australia

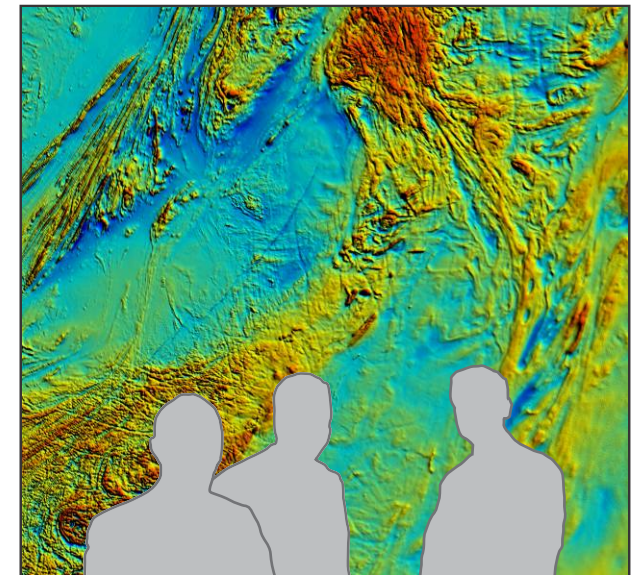


**EXPLORATION
INCENTIVE SCHEME**

Geological Survey Open Day

Friday 24 February 2017

**Esplanade Hotel Fremantle
Cnr Marine Tce & Essex St**



REGISTER ONLINE

www.dmp.wa.gov.au/gswa2017

**For further information, please contact
Geological Survey of Western Australia**

Tel: (08) 9222 3168 Fax: (08) 9222 3633



Government of Western Australia
Department of Mines and Petroleum



Government of Western Australia
Department of Mines and Petroleum



Government of Western Australia
Department of Mines and Petroleum



GSWA 2017 — Geological Survey Open Day — 24 FEBRUARY 2017

ESPLANADE HOTEL FREMANTLE

Cnr Marine Tce & Essex St, Fremantle



8.15 – 8.45 REGISTRATION

SESSION 1

8.45 – 9.00	Welcome and opening remarks	Hon. Sean L'Estrange, Minister for Mines and Petroleum
9.00 – 9.25	Tools for discovering BIF-hosted iron ore deposits in the Pilbara Craton	Paul Duuring
9.25 – 9.50	Mafic dyke swarms and large igneous provinces in Western Australia get a digital makeover	Michael Wingate

MORNING TEA 9.50 – 10.45 IN THE DISPLAY AREA

SESSION 2

10.45 – 11.10	From subduction magmatism to cratonization: an isotopic perspective from the Capricorn Orogen	Simon Johnson
11.10 – 11.35	In situ phosphate dating of orogenic gold mineralization at Paulsens mine, southern Pilbara	Imogen Fielding, Curtin University
11.35 – 12.00	Making sense of the Eastern Goldfields stratigraphic story	Matt de Paoli

LUNCH 12.00 – 1.30

Ongoing demonstrations of online systems

SESSION 3

1.30 – 1.55	A hydrogeochemistry atlas for Western Australia	Dave Gray, CSIRO
1.55 – 2.20	Regolith and spinifex chemistry from the Ngururrpa area, northeastern Western Australia	Paul Morris
2.20 – 2.45	Digging up the dirt on Western Australian coal exploration, northern Perth Basin	Alan Millar

AFTERNOON TEA 2.45 – 3.15 IN THE DISPLAY AREA

SESSION 4

3.15 – 3.40	Revised tectono-stratigraphy of the Kimberley Basin, northern Western Australia	Christopher Phillips
3.40 – 4.05	Structural evolution of the S-bend region, east Albany–Fraser Orogen	Mark Munro
4.05 – 4.30	Post-Giles evolution of the Musgrave Province constrained by (multi-method) thermochronology	Raphael Quentin de Gromard

Sundowner 4.30 – 5.30

